



***ROTACTION***  
***Sockets and bits for***  
***Industrial power tools***



# ROTACTION – the professional Atlas Copco solution for safer tightening

Atlas Copco offers a new generation of covered sockets: ROTACTION.

The trendsetting, advanced ROTACTION concept promotes the increasing demands regarding operators safety and non-marking tools.

The combination of free rotating sleeves and newly developed covers for the connections "tool-to-socket" and "extension-to-socket" improve operators safety significantly.

ROTACTION is available for a large number of Atlas Copco's electrical assembly tools.

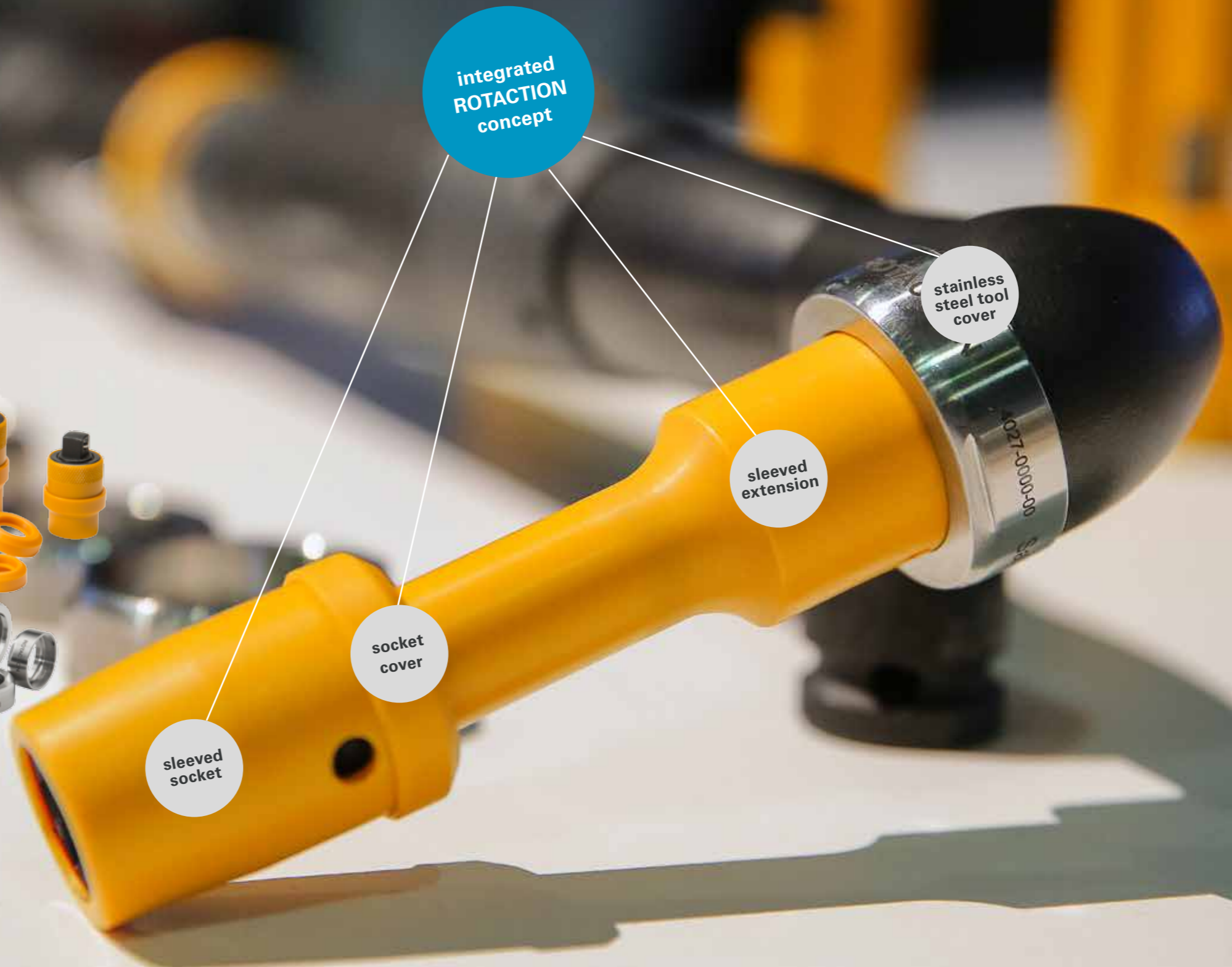
ROTACTION covered sockets ensure:

- Safer operation for workers
- Minimized risk of scratches and marks on painted surfaces
- Low friction
- High resistance to abrasion
- Small outer dimension for better joint accessibility

The ROTACTION range covers

- Numerous sockets, bit sockets, bits and nut setters with new, freely rotating protection sleeves
- Various extensions with rotating protection sleeves
- Socket Covers to bridge gaps between extension and socket (Refer to page 14)
- Stainless Steel Tool Covers to close the gap between anglehead tools and socket or extension (Refer to page 14)

Beside a wide range of standard products customized solutions can be realized.



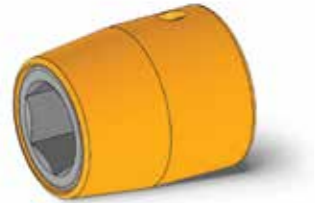
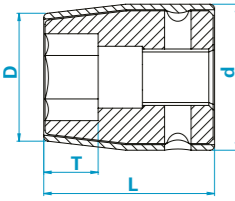
# Content

Sockets, short	Type No.	Page No.
Sockets short, hexagon	1263, 1363	6
Sockets short, hexagon with magnet	1260, 1360	6
Sockets short, Surface Drive	1211, 1311	7
Sockets short, Torx®	1264, 1364	7
Sockets, semi-long	Type No.	Page No.
Sockets, semi-long, hexagon	1242, 1342	7
Sockets, long	Type No.	Page No.
Sockets, long, hexagon	1244, 1344	8
Sockets, long, hexagon, with spring-mounted magnet	1265	8
Sockets, long, Surface Drive	1271, 1371	8
Bit Sockets	Type No.	Page No.
Bit Sockets, Torx®	1256, 1272, 1273	9
Bit Sockets, Torx® with ring-magnet	1226, 1227, 1228	9
Bits	Type No.	Page No.
Bits, style E, Torx® with ring-magnet	1041, 1042, 1043	10
Extensions	Type No.	Page No.
Extensions with pin	1234 2, 1334 2	10
Adapters	Type No.	Page No.
Quick-change adapters square to square	1236 3, 1336 3	11
Quick-change adapters square for bits style E	1236 2, 1336 2	11
Adapters female square for bits style C	1235 7, 1335 7	11
Adapters male square to male hexagon	1017, 1018	12
Nut setters	Type No.	Page No.
Nut setters, hexagon	1087	12
Nut setters, hexagon, with magnet	1066, 1077	12
Nut setters, hexagon, with spring-mounted magnet	1085	13
Nut setters, Torx®	1073	13
Socket covers and tool covers	Type No.	Page No.
Socket covers	1297 9, 1397 9	14
Tool covers	1297, 1397	14



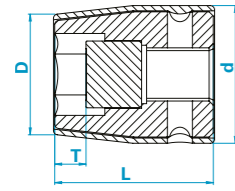


### Sockets, short version, hexagon



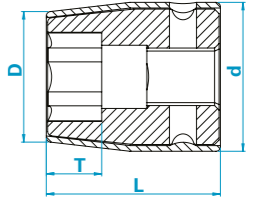
			Output-Ø D mm	Input-Ø d* mm	Length L mm	Depth T mm	Weight g	Ordering No.	Socket Cover Ref.*
	in	mm							
3/8	8	16.3	22	32	6	42	4027 1263 08	C22	
3/8	10	18.8	22	32	7	42	4027 1263 10	C22	
3/8	13	22.5	25	32	10	59	4027 1263 13	C25	
3/8	16	26.3	25	32	11	62	4027 1263 16	C25	
3/8	17	27.5	25	32	12	65	4027 1263 17	C25	
3/8	18	28.8	25	32	12	67	4027 1263 18	C25	
3/8	19	30	25	32	12	72	4027 1263 19	C25	
3/8	21	32.5	25	32	12	77	4027 1263 21	C25	
1/2	10	20	28	38	7	89	4027 1363 10	C28	
1/2	13	23.7	28	38	10	89	4027 1363 13	C28	
1/2	16	27.5	33	38	11	134	4027 1363 16	C33	
1/2	17	28.7	33	38	12	134	4027 1363 17	C33	
1/2	18	30	33	38	13	134	4027 1363 18	C33	
1/2	19	31.2	33	38	13	129	4027 1363 19	C33	
1/2	21	33.7	33	38	14	133	4027 1363 21	C33	
1/2	24	37.5	33	38	14	140	4027 1363 24	C33	

### Sockets, short version, hexagon, with magnet



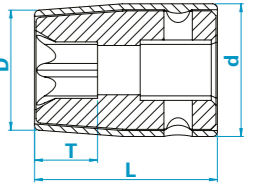
			Output-Ø D mm	Input-Ø d* mm	Length L mm	Depth T mm	Weight g	Ordering No.	Socket Cover Ref.*
	in	mm							
3/8	8	16.3	22	32	3.5	47	4027 1260 08	C22	
3/8	10	18.8	22	32	4.2	54	4027 1260 10	C22	
3/8	13	22.5	25	32	6	73	4027 1260 13	C25	
3/8	16	26.3	25	32	7	100	4027 1260 16	C25	
1/2	13	23.7	28	38	6	104	4027 1360 13	C28	
1/2	16	27.5	33	38	7	149	4027 1360 16	C33	
1/2	17	28.7	33	38	7.5	149	4027 1360 17	C33	
1/2	18	30	33	38	7.8	151	4027 1360 18	C33	
1/2	19	31.2	33	38	8	152	4027 1360 19	C33	

### Sockets, short version, Surface Drive



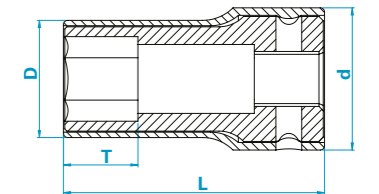
			Output-Ø D mm	Input-Ø d* mm	Length L mm	Depth T mm	Weight g	Ordering No.	Socket Cover Ref.*
	in	mm							
3/8	8	16.3	22	32	6	44	4027 1211 08	C22	
3/8	10	18.8	22	32	7	44	4027 1211 10	C22	
3/8	13	22.5	25	32	10	61	4027 1211 13	C25	
3/8	16	26.3	25	32	11	62	4027 1211 16	C25	
3/8	17	27.5	25	32	12	65	4027 1211 17	C25	
3/8	18	28.8	25	32	12	67	4027 1211 18	C25	
3/8	19	30	25	32	12	72	4027 1211 19	C25	
1/2	10	20	28	38	7	90	4027 1311 10	C28	
1/2	13	23.7	28	38	10	90	4027 1311 13	C28	
1/2	16	27.5	33	38	11	137	4027 1311 16	C33	
1/2	17	28.7	33	38	12	137	4027 1311 17	C33	
1/2	18	30	33	38	13	134	4027 1311 18	C33	
1/2	19	31.2	33	38	13	132	4027 1311 19	C33	
1/2	21	33.7	33	38	14	133	4027 1311 21	C33	

### Sockets, short version, for Torx®-screws



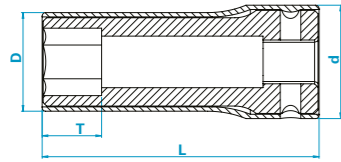
			Output-Ø D mm	Input-Ø d* mm	Length L mm	Depth T mm	Weight g	Ordering No.	Socket Cover Ref.*
		in							
3/8	E8	14.7	22	32	6	46	4027 1264 08	C22	
3/8	E10	15.2	22	32	7.2	44	4027 1264 10	C22	
3/8	E12	17.2	22	32	8.3	45	4027 1264 12	C22	
3/8	E14	20.2	22	32	9.6	48	4027 1264 14	C22	
1/2	E10	17.3	28	38	7.2	90	4027 1364 10	C28	
1/2	E12	18.2	28	38	8.3	89	4027 1364 12	C28	
1/2	E14	21.2	28	38	9.6	92	4027 1364 14	C28	
1/2	E16	22.2	28	38	10.8	92	4027 1364 16	C28	
1/2	E18	25.2	28	38	12	93	4027 1364 18	C28	

### Sockets, semi-long version, hexagon



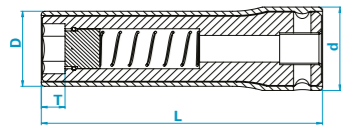
			Output-Ø D mm	Input-Ø d* mm	Length L mm	Depth T mm	Weight g	Ordering No.	Socket Cover Ref.*
	in	mm							
3/8	8	15.3	22	50	8	44	4027 1242 08	C22	
3/8	10	17.8	22	50	10	50	4027 1242 10	C22	
3/8	13	21.5	25	50	13	71	4027 1242 13	C25	
3/8	16	25.3	25	50	16	83	4027 1242 16	C25	
1/2	10	18.5	28	60	10	85	4027 1342 10	C28	
1/2	13	22.2	28	60	13	98	4027 1342 13	C28	
1/2	16	26	33	60	16	142	4027 1342 16	C33	
1/2	17	27.2	33	60	17	150	4027 1342 17	C33	
1/2	18	28.5	33	60	18	156	4027 1342 18	C33	
1/2	19	29.7	33	60	19	159	4027 1342 19	C33	
1/2	21	32.2	33	60	21	178	4027 1342 21	C33	

### Sockets, long version, hexagon



			Output-Ø D mm	Input-Ø d* mm	Length L mm	Depth T mm	Weight g	Ordering No.	Socket Cover Ref.*
	in	mm							
3/8	8	16.3	22	80	8	87	4027 1244 08	C22	
3/8	10	18.8	22	80	10	99	4027 1244 10	C22	
3/8	13	22.5	25	80	13	145	4027 1244 13	C25	
3/8	16	26.2	25	80	16	163	4027 1244 16	C25	
1/2	10	20	28	80	10	147	4027 1344 10	C28	
1/2	13	23.7	28	80	13	169	4027 1344 13	C28	
1/2	16	27.5	33	80	16	240	4027 1344 16	C33	
1/2	17	28.7	33	80	17	241	4027 1344 17	C33	
1/2	18	30	33	80	18	241	4027 1344 18	C33	
1/2	19	31.2	33	80	19	268	4027 1344 19	C33	
1/2	21	33.7	33	80	21	274	4027 1344 21	C33	

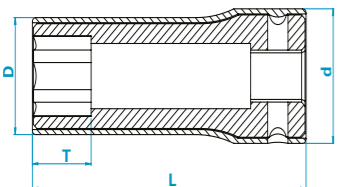
### Sockets, long version, hexagon, with spring-mounted magnet



			Output-Ø D mm	Input-Ø d* mm	Length L mm	Depth T mm	Weight g	Ordering No.	Socket Cover Ref.*
	in	mm							
3/8	8	16.3	22	80	4	87	4027 1265 08	C22	
3/8	10	18.8	22	80	4.5	110	4027 1265 10	C22	
3/8	13	22.5	25	80	6.5	172	4027 1265 13	C25	

Note: Spring travel approx. 25 mm

### Sockets, long version, surface drive



			Output-Ø D mm	Input-Ø d* mm	Length L mm	Depth T mm	Weight g	Ordering No.	Socket Cover Ref.*
	in	mm							
3/8	8	16.3	22	80	8	95	4027 1271 08	C22	
3/8	10	18.8	22	80	10	102	4027 1271 10	C22	
3/8	13	22.5	25	80	13	142	4027 1271 13	C25	
3/8	16	26.2	25	80	16	163	4027 1271 16	C25	
1/2	10	20	28	80	10	143	4027 1371 10	C28	
1/2	13	23.7	28	80	13	165	4027 1371 13	C28	
1/2	16	27.5	33	80	16	236	4027 1371 16	C33	
1/2	17	28.7	33	80	17	241	4027 1371 17	C33	
1/2	18	30	33	80	18	241	4027 1371 18	C33	
1/2	19	31.2	33	80	19	261	4027 1371 19	C33	
1/2	21	33.7	33	80	21	269	4027 1371 21	C33	

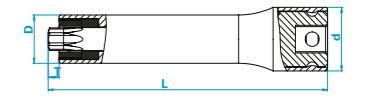
### Bit sockets for Torx®-screws

			Input-Ø d* mm	Length L mm	Weight g	Ordering No.	Socket Cover Ref.*
		in					
3/8	T30		22	50	41	4027 1272 30	C22
3/8	T30		22	100	57	4027 1256 30	C22
3/8	T30		22	150	75	4027 1273 30	C22
3/8	T40		22	50	43	4027 1272 40	C22
3/8	T40		22	100	65	4027 1256 40	C22
3/8	T40		22	150	86	4027 1273 40	C22
3/8	T45		22	50	44	4027 1272 45	C22
3/8	T45		22	100	66	4027 1256 45	C22
3/8	T45		22	150	87	4027 1273 45	C22
3/8	T50		25	50	62	4027 1272 50	C25
3/8	T50		25	100	95	4027 1256 50	C25
3/8	T50		25	150	129	4027 1273 50	C25
3/8	T55		25	50	70	4027 1272 55	C25
3/8	T55		25	100	117	4027 1256 55	C25
3/8	T55		25	150	163	4027 1273 55	C25

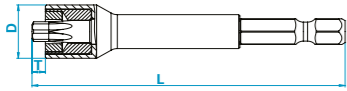


### Bit sockets for Torx®-screws, with ring-magnet

			Output-Ø D mm	Input-Ø d* mm	Length L mm	Depth T mm	Weight g	Ordering No.	Socket Cover Ref.*
		in							
3/8	T30		13.7	22	50	3.2	49	4027 1226 31	C22
3/8	T30		13.7	22	100	3.2	72	4027 1227 31	C22
3/8	T30		13.7	22	150	3.2	94	4027 1228 31	C22
3/8	T40		16.7	22	50	3.4	58	4027 1226 41	C22
3/8	T40		16.7	22	100	3.4	89	4027 1227 41	C22
3/8	T40		16.7	22	150	3.4	120	4027 1228 41	C22
3/8	T45		16.7	22	50	3.9	59	4027 1226 46	C22
3/8	T45		16.7	22	100	3.9	90	4027 1227 46	C22
3/8	T45		16.7	22	150	3.9	121	4027 1228 46	C22
3/8	T50		19.7	25	50	4.6	85	4027 1226 51	C25
3/8	T50		19.7	25	100	4.6	130	4027 1227 51	C25
3/8	T50		19.7	25	150	4.6	178	4027 1228 51	C25
3/8	T55		22.2	25	50	5.1	99	4027 1226 56	C25
3/8	T55		22.2	25	100	5.1	162	4027 1227 56	C25
3/8	T55		22.2	25	150	5.1	225	4027 1228 56	C25

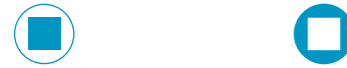
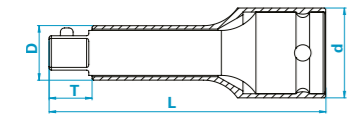


## Bits for Torx®-screws, style E, with ring-magnet



		Output-Ø D mm	Length L mm	Depth T mm	Weight g	Ordering No.
	<b>in</b>					
1/4	T20	11.2	75	2.3	20	4027 1041 21
1/4	T20	11.7	100	2.3	28	4027 1042 21
1/4	T20	11.8	150	2.3	41	4027 1043 21
1/4	T25	11.2	75	3	22	4027 1041 26
1/4	T25	11.7	100	3	28	4027 1042 26
1/4	T25	11.8	150	3	40	4027 1043 26
1/4	T30	13.2	75	3.2	25	4027 1041 31
1/4	T30	13.7	100	3.2	32	4027 1042 31
1/4	T30	13.8	150	3.2	46	4027 1043 31

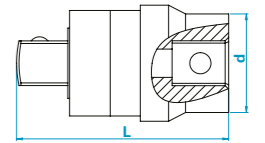
## Extension with pin at the output drive



		Input-Ø d* mm	Length L mm	Weight g	Ordering No.	Socket Cover Ref.*
	<b>in</b>					
3/8	3/8	25	50	70	4027 1234 20	C25
3/8	3/8	25	75	98	4027 1234 21	C25
3/8	3/8	25	100	122	4027 1234 22	C25
3/8	3/8	25	125	145	4027 1234 23	C25
3/8	3/8	25	150	169	4027 1234 24	C25
3/8	3/8	25	200	217	4027 1234 26	C25
3/8	3/8	25	250	264	4027 1234 27	C25
1/2	1/2	33	50	150	4027 1334 20	C33
1/2	1/2	33	75	192	4027 1334 21	C33
1/2	1/2	33	100	235	4027 1334 22	C33
1/2	1/2	33	125	277	4027 1334 23	C33
1/2	1/2	33	150	319	4027 1334 24	C33
1/2	1/2	33	200	406	4027 1334 26	C33
1/2	1/2	33	250	489	4027 1334 27	C33

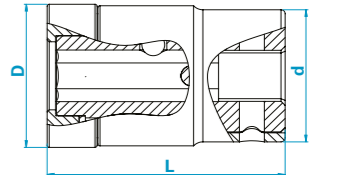
## Quick-change adapters

		Input-Ø d mm	Length L mm	Weight g	Ordering No.	Socket Cover Ref.*
	<b>in</b>					
3/8	3/8	22	45	70	4027 1236 30	C22
1/2	1/2	28	60	150	4027 1336 30	C28



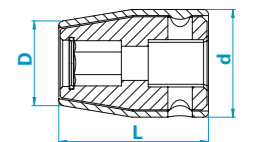
## Quick-change adapters for bits style E

		Input-Ø d mm	Length L mm	Weight g	Ordering No.	Socket Cover Ref.*
	<b>in</b>					
3/8	1/4	22	46	75	4027 1236 21	C22
3/8	7/16	25	45	162	4027 1236 23	C25
1/2	7/16	33	55	200	4027 1336 23	C33

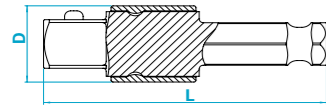


## Adapters for bits style C

		Output-Ø D mm	Input-Ø d mm	Length L mm	Weight g	Ordering No.	Socket Cover Ref.*
	<b>in</b>						
3/8	1/4	14	22	30	35	4027 1235 70	C22
3/8	5/16	17	22	30	38	4027 1235 71	C22
1/2	5/16	17	28	38	68	4027 1335 71	C28



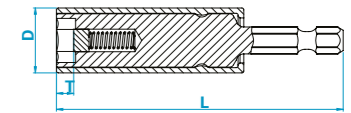
### Adapters, style E, with pin at the output drive



		Length L mm	Weight g	Ordering No.
in	in			
1/4	3/8	75	50	4027 1017 16
1/4	3/8	100	52	4027 1017 17
7/16	3/8	70	62	4027 1018 06
7/16	3/8	125	123	4027 1018 07
7/16	3/8	200	205	4027 1018 09
7/16	1/2	70	85	4027 1018 16
7/16	1/2	125	145	4027 1018 17
7/16	1/2	200	240	4027 1018 19



### Nut setters, hexagon, style E, with spring-mounted magnet

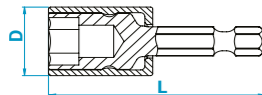


		Output-Ø D mm	Length L mm	Depth T mm	Weight g	Ordering No.
in	mm					
1/4	8	15.5	75	4	50	4027 1085 08
1/4	10	17.3	75	4.5	50	4027 1085 10
1/4	13	20.8	75	6.5	90	4027 1085 13

Note: Spring travel approx. 25 mm



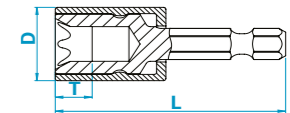
### Nut setters, hexagon, style E



		Output-Ø D mm	Length L mm	Depth T mm	Weight g	Ordering No.
in	mm					
1/4	8	14.8	50	6	20	4027 1087 08
1/4	10	17	50	7	30	4027 1087 10
1/4	13	20.8	50	8	30	4027 1087 13



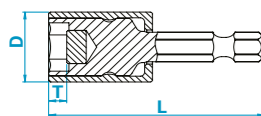
### Nut setters, style E, for Torx®-screws



		Output-Ø D mm	Length L mm	Depth T mm	Weight g	Ordering No.
in						
1/4	E8	12.9	50	6	20	4027 1073 08
1/4	E10	14.9	50	7.2	20	4027 1073 10
1/4	E12	16.9	50	8.3	20	4027 1073 12



### Nut setters, hexagon, style E, with magnet



		Output-Ø D mm	Length L mm	Depth T mm	Weight g	Ordering No.
in	mm					
1/4	8	14.8	50	3.5	20	4027 1077 08
1/4	8	15.5	75	3.5	40	4027 1066 08
1/4	10	17	50	5.2	30	4027 1077 10
1/4	10	17.3	75	5.2	40	4027 1066 10
1/4	13	20.8	50	6	40	4027 1077 13
1/4	13	20.8	75	6	50	4027 1066 13





### How to find the right tool cover and socket cover:

- Check square drive and thread from your Atlas Copco Powertool the Tool Cover Selection Guide on the right will support you! Pay attention to the input diameter of the selected socket.
- In the Tool Cover-table you will find the relevant tool cover closing the gap between powertool and socket or extension.
- If an extension is used, you will find the relevant socket cover bridging the gap between extension and socket in the Socket Cover-table below with support from the cover ref. indicated in each socket table on pages 6-13.

### Socket, short version

in	mm	Output-Ø D mm	Input-Ø d mm	Length L mm
3/8	8	16.3	22	32
3/8	10	18.8	22	32
3/8	13	22.5	25	32
3/8	16	26.3	25	32
3/8	17	27.5	25	32
3/8	18	28.8	25	32

### Socket covers



Socket Cover Ref.	Input size in	Input-Ø d of socket mm	Length L mm	Weight g	Ordering No.
	<b>in</b>				
C22	3/8	22	7.5	2	4027 1297 90
C25	3/8	25	7.5	3	4027 1297 91
C28	1/2	28	7.5	2	4027 1397 90
C33	1/2	33	7.5	3	4027 1397 91

### Tool covers



Input size in	Input-Ø d of socket/extension mm	Thread	Length L mm	Weight g	Ordering No.
3/8	22	M24x1LH	19	50	4027 1297 00
3/8	25	M24x1LH	19	46	4027 1297 01
3/8	22	M27x0,75LH	11.7	12	4027 1297 02
3/8	25	M27x0,75LH	11.7	8	4027 1297 03
3/8	22	M34x0,75LH	11.7	24	4027 1297 04
3/8	25	M34x0,75LH	11.7	21	4027 1297 05
3/8	22	M30x0,75LH	11.7	16	4027 1297 06
3/8	25	M30x0,75LH	11.7	13	4027 1297 07
1/2	28	M30x1LH	13	40	4027 1397 00
1/2	33	M30x1LH	13	34	4027 1397 01
1/2	28	M39x1LH	17	46	4027 1397 02
1/2	33	M39x1LH	17	34	4027 1397 03
1/2	28	M43x1LH	19	70	4027 1397 04
1/2	33	M43x1LH	19	61	4027 1397 05
1/2	28	M48x1LH	19	90	4027 1397 06
1/2	33	M48x1LH	19	79	4027 1397 07

### Tool cover selection guide

For model	Input-Ø d of socket or extension mm	Tool cover Ordering No.
<b>ETP STR61</b>		
ETP STR61-20	3/8	22 25 4027 1297 00 4027 1297 01
ETP STR61-30	3/8	22 25 4027 1297 00 4027 1297 01
ETP STR61-50	1/2	28 33 4027 1397 00 4027 1397 01
ETP STR61-70	1/2	28 33 4027 1397 00 4027 1397 01
ETP STR61-90	1/2	28 33 4027 1397 00 4027 1397 01
ETP STR61-120	1/2	28 33 4027 1397 00 4027 1397 01
<b>ETV DS72</b>		
ETV DS72-28	3/8	22 25 4027 1297 02 4027 1297 03
ETV DS72-30	3/8	22 25 4027 1297 06 4027 1297 07
ETV DS72-40	3/8	22 25 4027 1297 04 4027 1297 05
ETV DS72-50	3/8	22 25 4027 1297 04 4027 1297 05
ETV DS72-70	1/2	28 33 4027 1397 02 4027 1397 03
ETV DS72-100	1/2	28 33 4027 1397 04 4027 1397 05
ETV DS72-160	1/2	28 33 4027 1397 06 4027 1397 07
ETV DS72-180	1/2	28 33 4027 1397 06 4027 1397 07
<b>ETV DS92</b>		
ETV DS92-100	1/2	28 33 4027 1397 06 4027 1397 07
ETV DS92-180	1/2	28 33 4027 1397 06 4027 1397 07
<b>ETV ES21</b>		
ETV ES21-20	3/8	22 25 4027 1297 02 4027 1297 03
<b>ETV ES61</b>		
ETV ES61-25	3/8	22 25 4027 1297 02 4027 1297 03
ETV ES61-30	3/8	22 25 4027 1297 06 4027 1297 07
ETV ES61-40	3/8	22 25 4027 1297 04 4027 1297 05
ETV ES61-50	3/8	25 4027 1297 05
ETV ES61-70	1/2	28 33 4027 1397 02 4027 1397 03
ETV ES61-100	1/2	28 33 4027 1397 04 4027 1397 05
ETV ES61-150	1/2	28 33 4027 1397 06 4027 1397 07
ETV ES61-180	1/2	28 33 4027 1397 06 4027 1397 07
<b>ETV SB33</b>		
ETV SB33-10	3/8	22 25 4027 1297 02 4027 1297 03
ETV SB33-15	3/8	22 25 4027 1297 02 4027 1297 03
ETV SB33-30	3/8	22 25 4027 1297 06 4027 1297 07
<b>ETV SB63</b>		
ETV SB63-40	3/8	22 25 4027 1297 04 4027 1297 05
ETV SB63-50	3/8	22 25 4027 1297 04 4027 1297 05
ETV SB63-70	1/2	28 33 4027 1397 02 4027 1397 03
ETV SB63-100	1/2	28 33 4027 1397 04 4027 1397 05
ETV SB63-140	1/2	28 33 4027 1397 06 4027 1397 07
<b>ETV SL21</b>		
ETV SL21-20	3/8	22 25 4027 1297 02 4027 1297 03
<b>ETV ST31</b>		
ETV ST31-20	3/8	22 25 4027 1297 02 4027 1297 03

For model	Input-Ø d of socket or extension mm	Tool cover Ordering No.
<b>ETV ST61</b>		
ETV ST61-28	3/8	22 25 4027 1297 02 4027 1297 03
ETV ST61-30	3/8	22 25 4027 1297 06 4027 1297 07
ETV ST61-40	3/8	22 25 4027 1297 04 4027 1297 05
ETV ST61-50	3/8	22 25 4027 1297 04 4027 1297 05
ETV ST61-70	1/2	28 33 4027 1397 02 4027 1397 03
ETV ST61-100	1/2	28 33 4027 1397 04 4027 1397 05
ETV ST61-150	1/2	28 33 4027 1397 06 4027 1397 07
ETV ST61-180	1/2	28 33 4027 1397 06 4027 1397 07
<b>ETV ST81</b>		
ETV ST81-50	3/8	22 25 4027 1297 04 4027 1297 05
ETV ST81-70	1/2	28 33 4027 1397 02 4027 1397 03
ETV ST81-100	1/2	28 33 4027 1397 04 4027 1397 05
ETV ST81-150	1/2	28 33 4027 1397 06 4027 1397 07
ETV ST81-180	1/2	28 33 4027 1397 06 4027 1397 07
<b>ETV ST101</b>		
ETV ST101-100	1/2	28 33 4027 1397 04 4027 1397 05
ETV ST101-180	1/2	28 33 4027 1397 06 4027 1397 07
<b>ETV STB33</b>		
ETV STB33-20	3/8	22 25 4027 1297 02 4027 1297 03
ETV STB33-30	3/8	22 25 4027 1297 06 4027 1297 07
<b>ETV STB34</b>		
ETV STB34-30	3/8	22 25 4027 1297 06 4027 1297 07
<b>ETV STB63</b>		
ETV STB63-30	3/8	22 25 4027 1297 06 4027 1297 07
ETV STB63-40	3/8	22 25 4027 1297 04 4027 1297 05
ETV STB63-50	3/8	22 25 4027 1297 04 4027 1297 05
ETV STB63-70	1/2	28 33 4027 1397 02 4027 1397 03
ETV STB63-100	1/2	28 33 4027 1397 04 4027 1397 05
<b>ETV STB64</b>		
ETV STB64-50	3/8	22 25 4027 1297 04 4027 1297 05
ETV STB64-70	1/2	28 33 4027 1397 02 4027 1397 03
ETV STB64-100	1/2	28 33 4027 1397 04 4027 1397 05
<b>ETV STR61</b>		
ETV STR61-25	3/8	22 25 4027 1297 02 4027 1297 03
ETV-STR61-30	3/8	22 25 4027 1297 06 4027 1297 07
ETV STR61-40	3/8	22 25 4027 1297 04 4027 1297 05
ETV STR61-50	3/8	22 25 4027 1297 04 4027 1297 05
ETV STR61-70	1/2	28 33 4027 1397 02 4027 1397 03
ETV STR61-100	1/2	28 33 4027 1397 04 4027 1397 05
ETV STR61-150	1/2	28 33 4027 1397 06 4027 1397 07
ETV STR61-180	1/2	28 33 4027 1397 06 4027 1397 07



## *Committed to sustainable productivity*

We stand by our responsibilities towards our customers,  
towards the environment and the people around us.  
We make performance stand the test of time.  
This is what we call - Sustainable Productivity.

[www.atlascopco.com](http://www.atlascopco.com)

The Atlas Copco logo consists of the company name in a white, italicized serif font, centered between two horizontal white bars of equal length.

*Atlas Copco*